

Ledyard Building

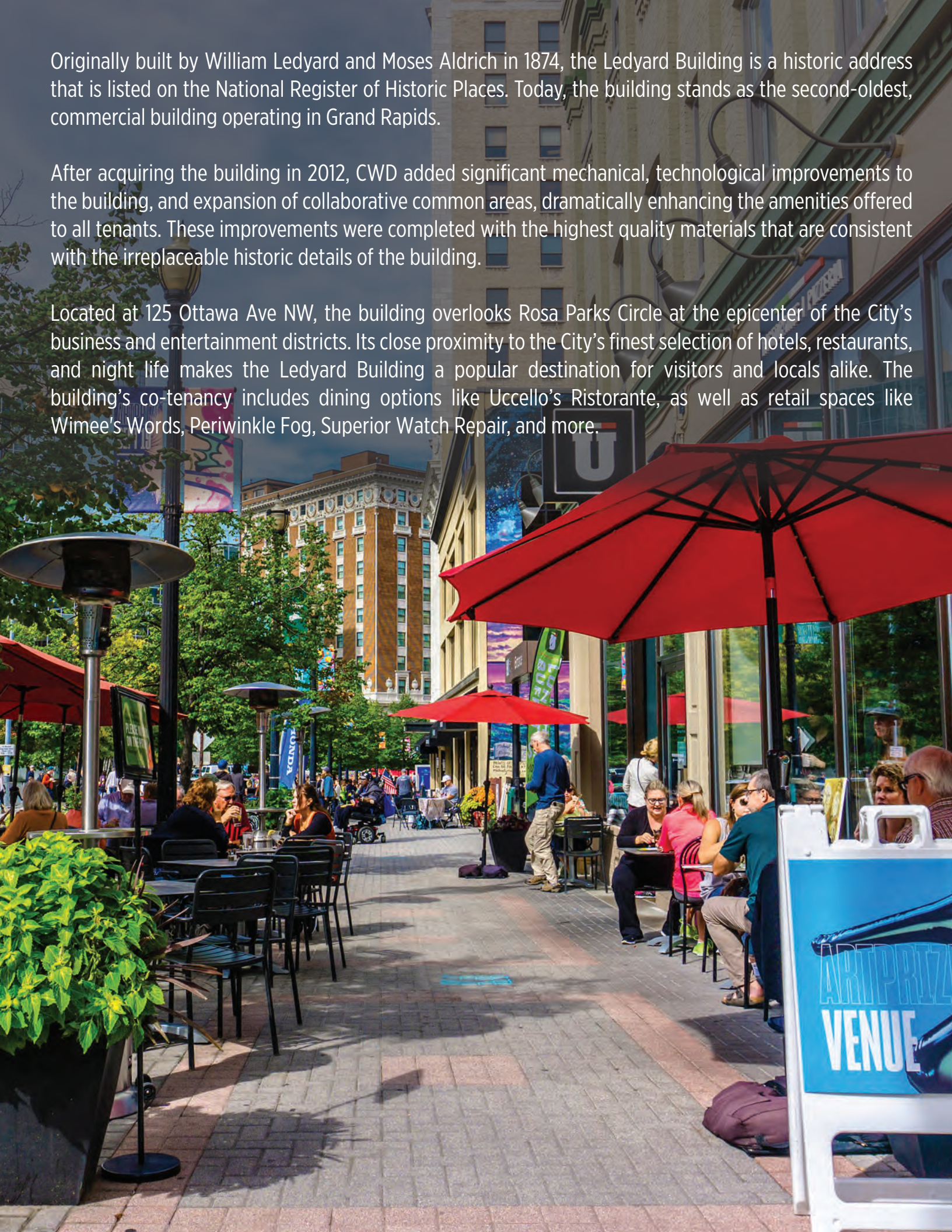
Executive Suite Floorplans



Originally built by William Ledyard and Moses Aldrich in 1874, the Ledyard Building is a historic address that is listed on the National Register of Historic Places. Today, the building stands as the second-oldest, commercial building operating in Grand Rapids.

After acquiring the building in 2012, CWD added significant mechanical, technological improvements to the building, and expansion of collaborative common areas, dramatically enhancing the amenities offered to all tenants. These improvements were completed with the highest quality materials that are consistent with the irreplaceable historic details of the building.

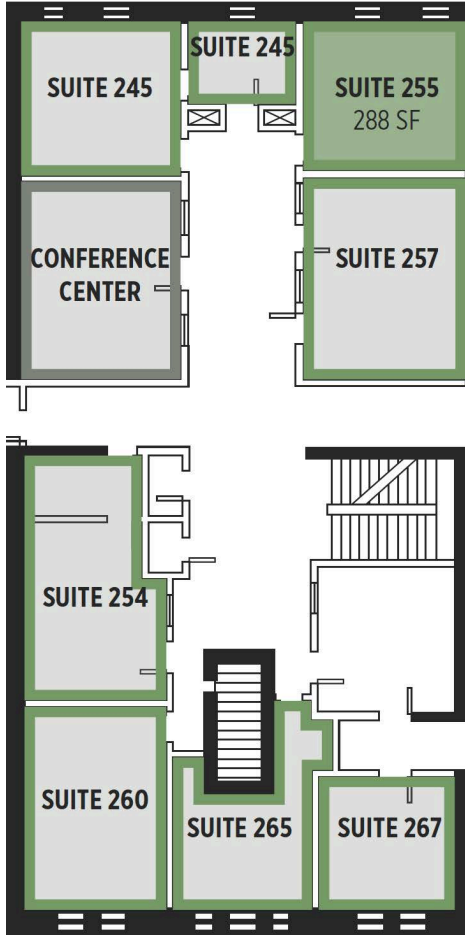
Located at 125 Ottawa Ave NW, the building overlooks Rosa Parks Circle at the epicenter of the City's business and entertainment districts. Its close proximity to the City's finest selection of hotels, restaurants, and night life makes the Ledyard Building a popular destination for visitors and locals alike. The building's co-tenancy includes dining options like Uccello's Ristorante, as well as retail spaces like Wimee's Words, Periwinkle Fog, Superior Watch Repair, and more.



2nd Floor

125 Ottawa Ave NW

Executive Suites



Executive Suites:

245	Leased	
250	Leased	
254	Leased	
255	288 SF	Call for details
257	Leased	
260	Leased	
265	Leased	
267	Leased	
268	Leased	

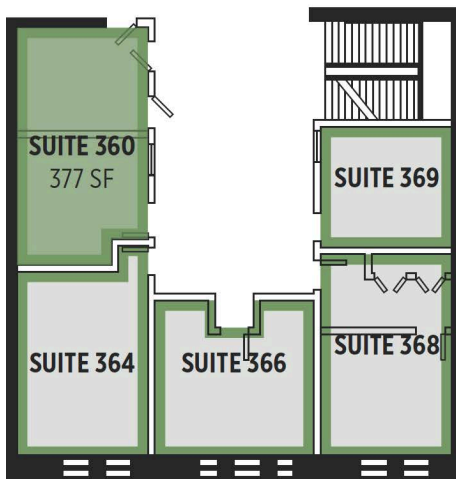
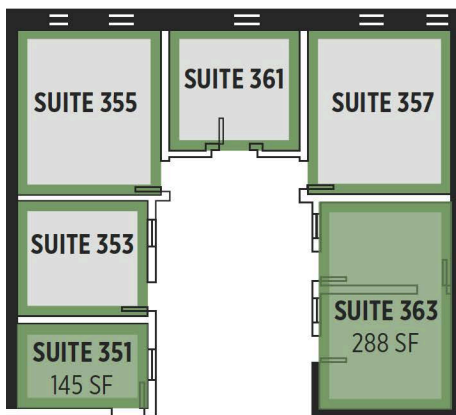
Executive Suites are **gross leases**. Utilities are included in the lease.



3rd Floor

125 Ottawa Ave NW

Executive Suites



Executive Suites:

351	145 SF	\$525 / month
353	Leased	
355	Leased	
357	Leased	
360	377 SF	\$675 / month
361	Leased	
363	332 SF	\$700 / month
364	Leased	
366	Leased	
368	Leased	
369	Leased	

Executive Suites are **gross leases**. Utilities are included in the lease.





Contact CWD for more information:

CWD Real Estate Investment
616.726.1700
info@cwdrealestate.com

www.cwdrealestate.com
f www.facebook.com/cwdrealestate
t @cwdrealestate
i @cwdrealestateinvestment